



**Jelf Road, London, SW2**

3 bedroom flat to let

**£726 Per Week**

Furnished

## Property Details

Ideally located just moments from the greenery of Brockwell Park, this spacious three-bedroom flat offers the perfect blend of comfort and convenience.

The property features a generous reception room, a separate kitchen with space for a dedicated dining area, and access to a private balcony—ideal for enjoying the warmer months. Each of the three double bedrooms is well-proportioned, with one benefitting from two large skylights that flood the room with natural light. A family-sized bathroom serves all three bedrooms.

Situated within walking distance of Brixton town centre, residents will enjoy easy access to a wide range of high street stores, supermarkets, pubs, bars, and restaurants. Brixton is renowned for its vibrant nightlife, ensuring you'll never be short of options for entertainment.

## Features

- Conversion Flat
- Three Bedrooms
- Around a 10 minute walk to Brixton Station
- Under a 13 minute walk to Brockwell Park
- Close To Transport Links
- Separate Kitchen

Council tax band C      EPC rating D (55)





Jelf Road, London, SW2



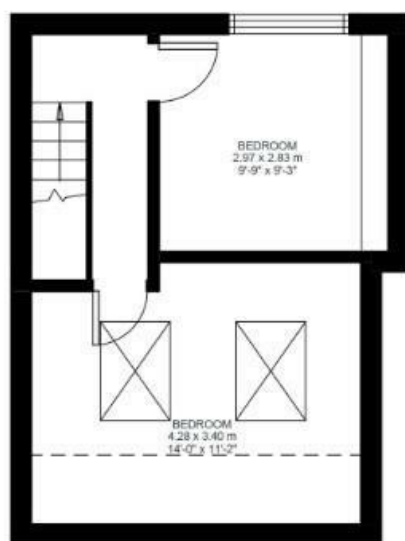
### 3 Bed flat

Approx internal area:

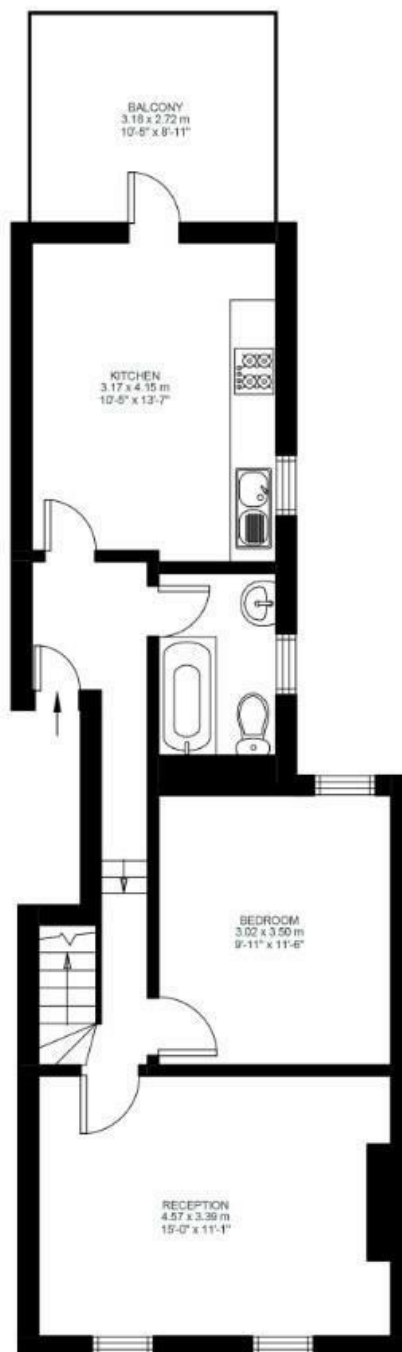
**873 sqft 81 sqm**

While we do try our very best, floor plans are produced as a guide only and we take no responsibility for the precise accuracy with which any property is represented

Jelf Road



Third Floor



Second Floor





Jelf Road, London, SW2

